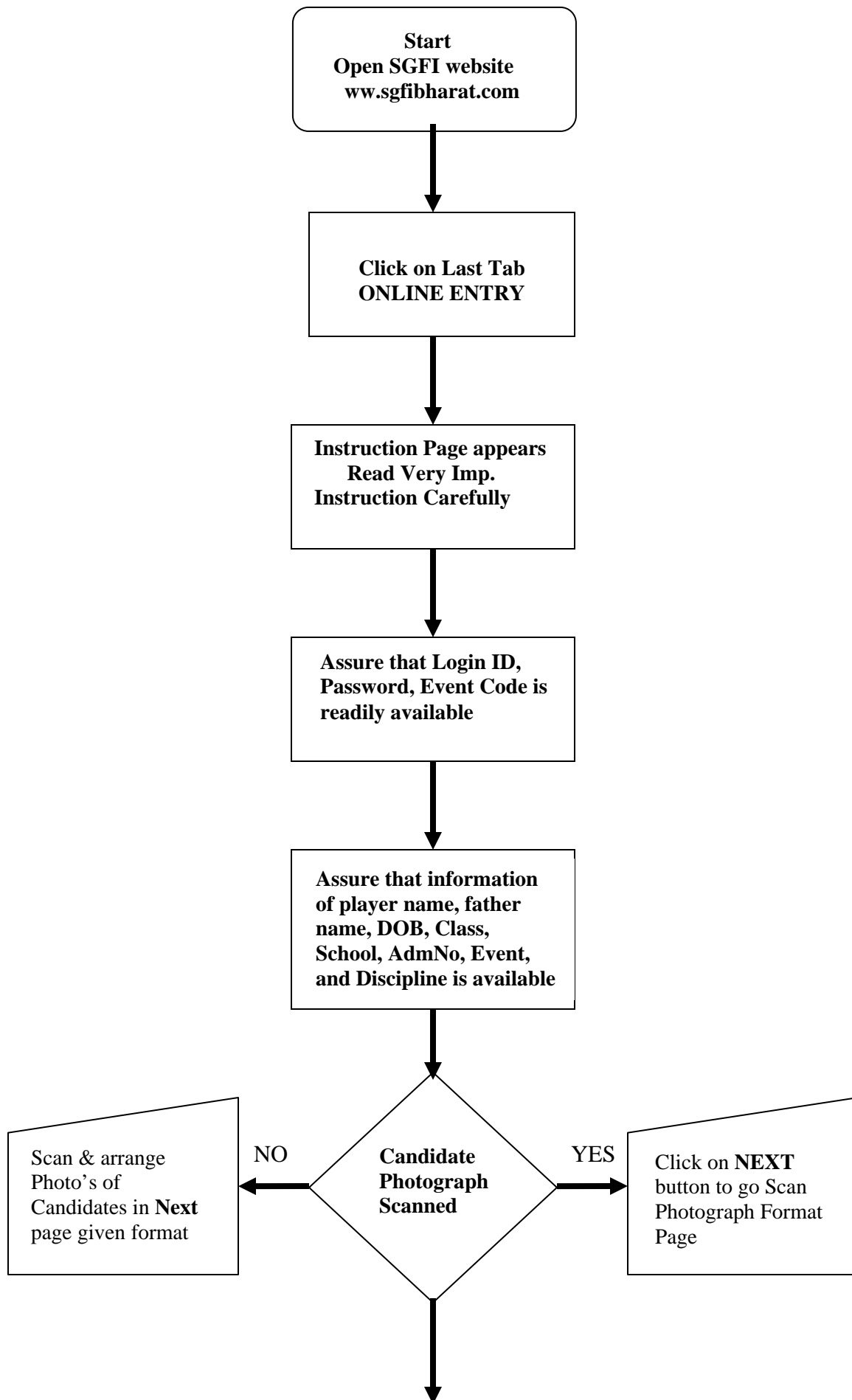


**FLOW CHART
REPRESENTATION FOR FILLING ONLINE OFFICIAL ENTRY FORM**



**Candidate Scan
Photograph format page
Download Format &
Paste Candidate photo
with Name, Recent Date
With Signature below**



**Scan Whole Page & Cut
& Save each candidate
photo with their name.**



**Click on NEXT button
go to Sign In Page....**



**Enter Login ID & Event
Password provided
earlier by SGFI**



**Event code page
Enter Event Code
provided earlier by SGFI**



**Event Detail Page Choose
Event in which your unit
team participating Click on
Enter Button**



**Online Official Entry Form
Page Enter Candidate
Detail Name, Father Name,
DOB-Class, School, Adm
No.**

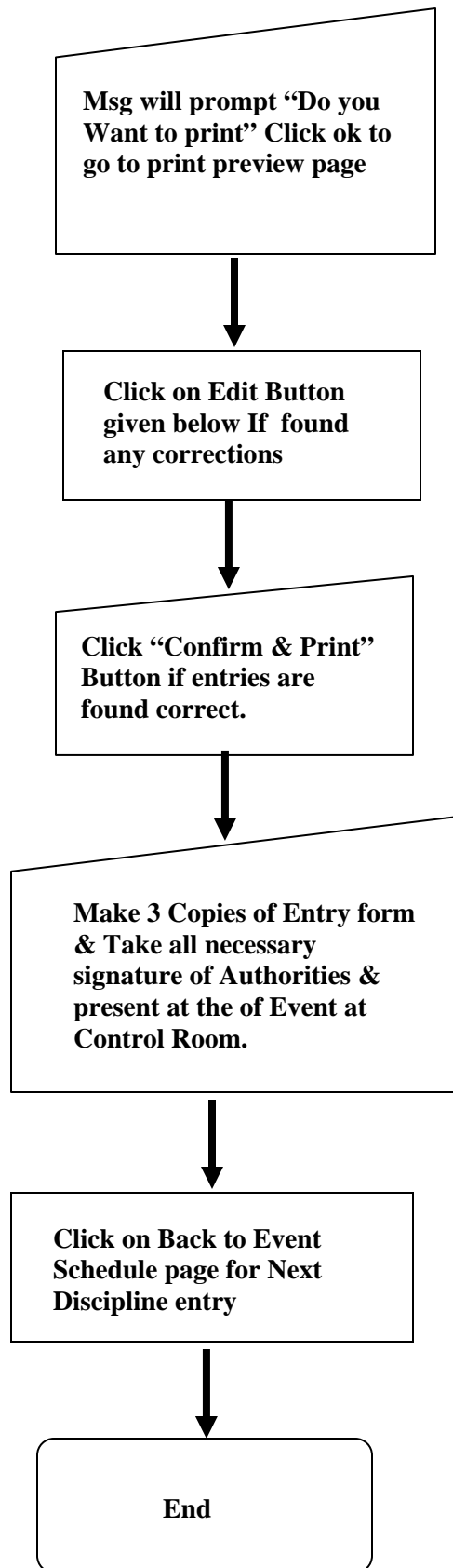
**Click on Save & Next
Button to Save each
candidate detail & fill for
next candidate.. Record of
each cand. Shown below**

**Msg will prompt if maximum
participant over..Click OK to
go to Photo upload page if
your unit is having less
participant Click on SKIP
button to go to photo upload
page**

**Candidate Photo Upload Page all
entered record display now its
time to upload candidate photo
which you have already scanned**

**Click on Browse & Select
each candidate Photo &
Select photo & click on Open
to upload in candidate
textbox follow steps for each
candidate**

**Enter Coach Name &
Manager Name given
below & then Click on
Save Photo button**



**S.G.F.I. HELP CENTER
FOR ONLINE OFFICIAL ENTRY TECHNICAL SUPPORT
CONTACT MR. PRASAD
ON – 09993002370**